

Dean Village News

Issue 141 • Winter/Spring 2005

Congestion charging postal referendum

The Council has announced that there will be a Transport Edinburgh postal referendum held on the proposed congestion charging scheme between 7th February and 21st February 2005.

This follows a long process which included a public enquiry last April, May and June. At the enquiry, the DVA raised various issues including the conflict between the Central Edinburgh Traffic Management scheme (CETM) and the Congestion Charging scheme. This had the net result of ensuring that Dean Village residents (living off Bell's Brae including Well Court and Damside) would not have been able to drive anywhere without experiencing a charge. Originally these residents would have been placed within the inner cordon and therefore charged for any journey from out with the cordon (eg Sainsbury's, Stockbridge or work) when returning home (during the qualifying hours of 07:30 to 18:30 Monday to Friday).

Unfortunately, in addition to this, and despite living within the inner cordon, these residents would have been unable to drive to a destination within the inner cordon without first driving out of the cordon by:

- travelling North up Dean Path towards Queensferry Road and through a charging point near the cemetery into the outer cordon, or
- driving South up Bell's Brae to the Dean Bridge (at which point it will be compulsory to turn left, due to the no right turn soon to be installed as part of the CETM) and therefore out of the inner cordon area.

The result as planned was any return journey during the day would involve travelling out of the inner cordon and incurring a £2.00 charge to return home (or to travel to your inner cordon destination). In other words a charge on each and every day you made a journey regardless of where you were visiting.

This point was noted at the enquiry and the scheme has now been modified to relocate the inner cordon charging point proposed for the North end of Dean Bridge to a new location at Randolph Cliff and to remove completely the charging point at the North end of Dean Path. The net effect of this change is to place Dean Village residents (living off Bell's Brae) in the

outer cordon area thereby removing charges for journeys involving outer cordon destinations. There will still be a charge for trips involving the inner cordon.



Residents living off Belford Road (including Sunbury, Hawthornbank, Belford Place and Belford Park) will remain within the inner cordon giving free access to the city centre but giving rise to charges for returning home through the cordon during the qualifying hours (07:30 to 18:30 Monday to Friday).

On the TIE web site www.iti.tiedinburgh.co.uk you can see much of the detail of the scheme including transcripts from the public enquiry. (DVA gave evidence on the morning of 2nd June 2004 if you wish to have a look). Further detail including the full enquiry report (Section 5 gives the reporters conclusions), cordon maps and so on can be found at www.edinburgh.gov.uk/transportedinburgh/congestion

Dean Village Association is keen to ensure that residents of the village have the information they need with regards to the impending postal referendum on the proposed congestion charging scheme. If you are on the Elector Roll you will qualify for a vote in the Transport Edinburgh postal referendum.

Useful sources of online information can be found at:

www.edinburgh.gov.uk/transportedinburgh

www.notolls.org.uk under the heading Edinburgh

<http://www.transportedinburgh.info/>

Traffic management

The current programme is for the first phase of the Central Edinburgh Traffic Management scheme which includes stopping general traffic in Hope Street and closing Belford Road to through traffic and transferring traffic to Melville Street is to be completed by Sunday 20 February 2005 details available on council web site at www.edinburgh.gov.uk/cetm

No to toll roads

“NO to Labour’s flawed Edinburgh Road Toll Scheme”, is the message that the Liberal Democrat Council Group is pushing before February’s referendum.

In Edinburgh’s case, we do not believe that adequate alternatives to the car will be available by 2006 when the two cordon, £2 a day charge will be imposed if the referendum shows public support.

For those who live close to a major route into the city, such as Leith Walk or Queensferry Road, there are frequent buses into the city centre. For those outwith the main corridors, good public transport alternatives are lacking.

Edinburgh could and should have a swathe of excellent transport improvements without road tolls. This would include a tram line from Leith to the Airport, reopening of the South Suburban Railway to passengers, a railway station at Edinburgh Airport, Waverley Station upgrade, Borders Railway and plenty of park and ride sites. In addition, we need simple but effective changes to bus services - improved timetabling, better interchange services, integrated ticketing, Real-Time bus stop information throughout the city, bus priority lights and support for school buses. None of this requires road tolls.

Given Labour’s record of cancellations and delays (e.g. CERT, Park & Rides, George Street underground car park), we believe that Labour cannot be trusted to create even modest improvements before road tolls. Indeed the independent Inquiry Report was dubious about Edinburgh’s ability to deliver.

Many businesses, particularly large and small retail traders, believe the proposed scheme will be harmful to the city centre economy. Yet another reason to have good public transport alternatives in place before considering tolls.

The Inquiry Report found the scheme would only reduce the rate of congestion, not congestion itself, and that many parts of Edinburgh between the two cordons would suffer increased congestion and pollution.

We believe this is the wrong scheme at the wrong time.

Councillor Tom Ponton

Liberal Democrat for Dean Ward

Contact your Councillor

To contact Dean ward Councillor, Tom Ponton, call 529 4956 for an appointment or email tom.ponton@edinburgh.gov.uk

Belford Lodge, Sunbury Street

This is another long running application which started its days as a proposal to construct 40 flats on the site of Belford Lodge which lies at the bottom of Sunbury Street. There have been too many twists and turns to go into the detail but we argued long and hard that additional traffic on Sunbury Street was not sensible due to the existing properties in the street having direct access onto the very narrow footpath.

Permission has now been granted for a development of 12 flats and there are many conditions attached one of which is that the footway on Sunbury Street must be repaired and upgraded prior to occupation of the development.

Rubbish!

The refuse collection days changed on 1st November 2004. The new refuse collection days are now Mondays and Thursdays. Please ensure your sacks are left on the kerbside by 9am on Monday and Thursday.

Special uplifts can be arranged for the disposal of bulky items such as furniture. This service is free of charge for up to six items. To arrange a special uplift contact Environmental and Consumer Services. T: 0131 529 3030, F: 0131 529 3014 or email: special.uplifts@edinburgh.gov.uk

Identity theft

Identify theft is on the rise, and concerns bank card cloning and the use of personal details from discarded receipts and credit or bank cards, poorly stored passports, and personal papers that get into the hands of these clever operators. Be sure of callers and don’t give personal information on the phone or by email unless certain of authenticity, follow up non-delivered mail, notify banks or suppliers immediately of any change of address. Buy a shredder and shred all personal documentation before putting it in the rubbish bin.

Community and Neighbourhood Watch News - Lothian and Borders Police. December 2004.

Concerned about crime in Dean?

At the end of March, The DVA committee is due to meet with Inspector Moore McCartney of Lothian and Borders Police. Do you have any issues or concerns you would like us to raise with Inspector McCartney? If so, please forward the details to the Secretary, Dean Village Association, 13 Well Court, Dean Path, Edinburgh EH4 3BE by Friday 11th March 2005.

Reflection on Christmas

One of my abiding feelings each year at Christmas is guilt. I think of all the people that I have meant to be in touch with over the year and here we are twelve months later and nothing has happened, but I still care for them and maybe next year will get round to writing or phoning them. I feel guilty as I trudge round Christmas shopping, resenting having to be in crowds and the fact that a lot of the shops don't have the sales before Christmas but take the extra money while they can. I feel guilty that I am not much different this Christmas from last Christmas or the one before, just a little bit older and a little bit balder. I feel guilty as I look at the presents I give and think of how the money could better be spent. But for all that I have to say that I love Christmas.

It's a real joy to know that I have friends from years past who think about me and who care. It's a joy to see people thought about, who otherwise would be forgotten. It is impressive to witness great generosity in the midst of all the other spending. So Christmas is a time for happiness. Even for those who do not share the Christian faith, the legacy of one period in the year when we make special efforts is important as it draws us back to the essentials of our human life.

But Christmas is also a time of sadness for many, who are reminded of loss and change in the course of the past year. We think of those who don't have the special people with them, whether because of death or because of separation. We think of those who will spend Christmas in hospital in pain and perhaps fear. We think of those who live with the regret of past actions that cannot now be put right. As we remember them we pray that the light of Christmas may be real for them and the darkness never overwhelm them.

A happy and blessedly guilt free 2005 to you all.

Michael Regan, Parish Priest

St Andrew's Ravelston

Award-winning Scottish Food Guide

makes the positive connection between Scotland's finest producers, suppliers & eating places in one highly effective website, providing an independent showcase for all seekers & providers of good food. All recommendations are listed solely on merit.



www.scottishfoodguide.com is published by Wendy Barrie Ltd, Drumsheugh Toll, Dean Village. Well known contributor to the Scottish Food Scene, Wendy is an uncompromising crusader for good food. For further information contact wendy@scottishfoodguide.com

Contact the elderly

Contact the Elderly is a national charity which helps to combat the loneliness so often felt by elderly people who live alone. One Sunday afternoon a month, volunteers enjoy driving elderly people to a volunteer's home for tea, talk and companionship.

This free service is for those who have no family nearby or see their family infrequently, perhaps are widowed, and are unable to go out unaccompanied.

Groups are kept small, so they remain friendly and everybody can join in easily. Outings are to accessible homes of welcoming volunteer hosts. Elderly group members are collected from their home by a volunteer driver, who will also take them safely home again. If you are interested in joining a Contact the Elderly group, call Freephone 0800 716 543. www.contact-the-elderly.org

An all embracing Health Practice
is now within your reach.

Medicalalternative

holistic health care & therapies
for the mind, body & spirit

Home Care
& Hospital

Wide range of
complementary
therapies

Acupuncture
& Massage

Herbal medicine
& dietetics
Health coaching

Medical assistance
treatments

Medicalalternative, Waterside House, 19 Hawthornbank Lane, Edinburgh EH4 3BH 0131 225 5656 reception@medicalalternative.com www.medicalalternative.com

Mews Garage

Your village car repair specialist

We'll do all the mechanical repairs
and put your car through MOT

Expert servicing and repairs

Tyres and exhaust fitted

Most credit cards accepted

Established 1982

10 Belgrave Mews, EH4 3AY

0131 343 3638

Find the bird quiz

Eg Gulp down - Swallow

1. Letter of the alphabet *only*
2. Famous locomotive
3. Fast
4. Tarred pig (anagram)
5. Heather has a heavenly body!
6. Underground bulbous stem or worker
7. Angry invoice
8. Musician on the beach
9. Painful complaint
10. Pearl fisher?
11. It is dark in a Force 8
12. Colourful toy *duck*
13. Cowardly tool
14. Communist grumble
15. She is in the Navy *WREN*
16. Country

Answers will be in the summer issue of Dean
Village News and online at www.deanvillage.org

Edinburgh Risk Management (General) has moved into 69A Dean Path

**You now have therefore a local and accessible General
Insurance broker for all your Insurance needs (including
Household, Motor and Commercial Risks)**

**The people are friendly and helpful and you can
consult at anytime for any insurance needs such
as property and liabilities**

The phone number is 0131- 311-4700
or email the firm at erm@erm-gen.co.uk or just pop in

Tree Warden Network

Dean Village will soon have its very own **Tree Warden**. We look forward to bringing you news from the Dean Tree Warden in future issues of Dean Village News.

The Tree Council's National Grid Tree Warden Scheme is an initiative to enable people to play an active role in conserving and enhancing their local trees and woods. Tree Wardens are volunteers, who work closely with their local community. Among the tasks they become involved in are: Gathering information and doing surveys of their local trees, so as to develop ideas for projects, discover where practical help and advice is needed, and become aware of threats to trees that may need bringing to the attention of the local authority.

Local community liaison is a key element in the Tree Warden's role. Tree Wardens may be asked questions about how to deal with a damaged tree, and how to obtain grant aid for planting. Wardens will not necessarily have all the answers, but they will soon learn where to find them.

Trees and woods need protection, and local people can often see what needs to be done before council officials. Tree Wardens have a vital role to play here, by informing the local council of threats to trees, and so helping to ensure compliance with tree preservation orders and planning consents. They can also keep their eyes open for trees showing signs of disease. They may also organise practical projects such as tree planting or woodland management.

Community involvement is one of the main aims of the Tree Warden Scheme. Wardens work with schools to create conservation areas, organise guided tree walks, give talks to local groups, encourage environmental improvement projects, plan tree planting projects for National Tree Week and so on.

More information about the Tree Warden Scheme can be found online at www.treewarden.org.uk.


HIS HAIR

**GENTLEMANS
HAIRCUTTERS**

**THE VERY BEST IN MENS HAIRCUTTING
IN EDINBURGH'S PRESTIGIOUS
WEST END**

**2a LYNEDOCCH PLACE, EDINBURGH
0131 220-6150**

January down the Dene

Cold, wet and windy weather have started this New Year for us. As temperatures drop wildlife is drawn down to the shelter of The Dene. Small songbirds are visible against the filigree of bare black branches. The well camouflaged tree-creeper has been seen spiralling up a tree near the iron bridge. The creamy voiced robin and the noisy wren can be heard most calm days. Flocks of long-tailed tits, sometimes known as flying tea-spoons, have been congregating in tree-tops near St. Bernard's well. Look out for groups of waxwings. They have been seen at Craiglockhart so we may be lucky. The electric blue flash of our kingfisher has been spotted regularly near the weir. Up near the Belford Hotel, two visiting goosanders spent time at the back of the weir, and a cormorant was bobbing about under the bridge to the Art Gallery.

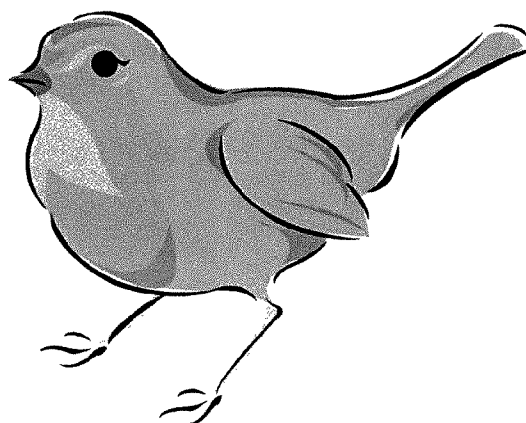
The excellent show of berries this year should mean a good breeding year for blackbirds and thrushes. I wonder what the readers' favourite bird is. I think the blackbird takes a lot of beating for its early May morning singing. Our singing owls, the tawny owls, can be heard most nights. It is the time for the males to establish their territories. This month's accidental must be the Green Parakeet in the trees near the Art Gallery. Perhaps it's a sign of global warming?

Talking about global warming, did you know that the date of flowering of the lesser celandine is being used as an indicator? We should be seeing the bright gold splashes of this little flower soon. An obsolete name for the plant is pilewort. It was introduced to the Faroe Islands as a treatment for haemorrhoids and still survives there in church yards.

Mink, stoat and grey squirrel have all shown themselves this month. If snow settles, we should have a fine time tracking their footprints. An otter was sighted in October, so keep an eye out.

Enjoy the nature we have on our own patch and please tell us of any unusual sightings. Would it be useful to have a sign up list on the DVA's Well Court notice board?

F.P.



0131 handyman

Handyman Service for Edinburgh

We will solve all sorts of problems around your home. Everything from fitting a new bathroom to changing a fuse.

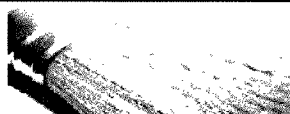
call 0131 477 1564



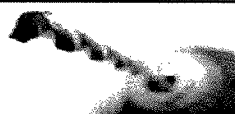
plumbing



electrical



decorating



general



flat-pack assembly



tiling

SATISFACTION GUARANTEED:

We charge £30.00 for the first hour and £7.50 per quarter-hour thereafter.

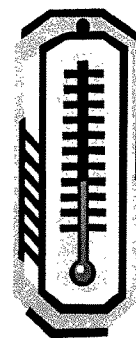
If you are not happy with our work we'll come back to do it again for you at no charge.

We also carry £2m of public liability insurance.

www.0131handyman.co.uk

Get the most out of your home...

Top ten energy saving tips from Warmburgh.



1. Switch off lights in empty rooms
2. Close curtains at dusk
3. Set thermostats correctly:
 - Hot water thermostats at around 60-65 degrees C
 - Room thermostats between 18-21 degrees C (or 23 degrees C if there are elderly or very young people in the home)
4. Turn electrical appliances off rather than leaving them on standby
5. Only fill the kettle with as much water as you need each time you boil it
6. Cook with lids on pans and match ring size to saucepan size
7. Avoid placing furniture in front of radiators
8. Wait until you have a full load before using your washing machine and use a lower washing temperature (between 30-40 degrees C)
9. Use a shower instead of a bath when possible
10. Tumble-dryers cost a lot to run – dry clothes outside or on a clothes rail for free

The Warmburgh Unit works with The City of Edinburgh Council to implement the Warmburgh Plan – the Council's strategy to improve the energy efficiency of all Edinburgh homes, aiming to make Edinburgh households warmer and healthier, cut fuel bills and help protect the environment.

There are 100% energy-saving grants from the Scottish Executive available to homeowners and tenants for insulation. Some households can even get free central heating. If you are over 60 or in receipt of benefits you are likely to be eligible for a grant.

Call the Warmburgh Advice Team on 0800 512012.

Institut français d'Ecosse

Promoting & developing the academic, artistic and cultural exchanges between France & Scotland

Much more than just a language !

Courses

Multimedia Library

Cultural Events

La Cuisine d'Odile Restaurant



13 Randolph Crescent
Edinburgh EH3 7JT
T 0131 225 5366
www.ifecosse.org.uk

Free music workshops

Take advantage of specialist individual and group tuition and rehearsal time with The Phoenix Wind Band through this series of free music workshops sponsored by The City of Edinburgh Council. The Phoenix Wind Band was formed in January 2003 with the aim of providing musicians with the opportunity to play together for enjoyment and development of skills.

The workshops take place on 12th, 26th February, and 5th March 2005 from 10am to 5pm. The concert, for family and friends, will be on Saturday 12th March 2005 at 7pm at St Andrew's and St George's Church, George Street.

The workshops will take place at Edinburgh Society of Musicians, 3 Belford Road, Edinburgh EH4 3BL.

Don't just listen to music, make it! Limited spaces available. Book now by calling the Phoenix Wind Band Secretary on 0131 334 2812 or email adamlizwight@talk21.com

Your big chance to act—now

Theatre Workshop presents its community play 2005, **Black Summer over Genoa – a reworking of Nothing ever Burns Down by Itself** in reaction to the G8 Summit taking place in Gleneagles this summer. Theatre Workshop will challenge and articulate protest in powerful, politically charged account of the demonstrations in Genoa in 2001 against the G8 summit.

Through the eyes of six different characters including French Anarchists Ariel and Dhulosso, a young Christian travelling from Skye, each of the characters is a fictionalised creation, constructed from accounts of those who were really there. **Nothing ever Burns Down by Itself** looks at their right to protest peacefully and how the authorities used violence to repress the protesting voices.

The Theatre Workshop is calling all volunteer performers (aged 16 plus) with or without previous acting experience to join in and discover the magic of being a part of a legendary Theatre Workshop show. The community play involves over 120 volunteers in every aspect of play making over an eight month period and celebrates the achievements of ordinary people in bringing about change.

Now is your chance to demonstrate peacefully against capitalism and globalisation in a production that will inspire and motivate all audiences.

Call 0131 225 7942 or email rlambert@twe.org.uk for more details and to confirm that you will attend the public meeting on Tuesday 1st February 2005 at 7pm, at the Theatre Workshop, 34 Hamilton Place, Edinburgh EH3 5AX. www.theatre-workshop.com

ON

At

Isabella

Ladies Shoes & Bags

58 St Stephen Street Stockbridge Edinburgh

www.isabellashoes.co.uk

Drumsheugh Baths Club

will re-open in February 2005
following major repairs and re-tiling

As a local resident you may
be interested in seeing or
experiencing the facilities

If so, please write to the Secretary at
Drumsheugh Baths Club,
5 Belford Road, EH4 3BL

Dean Parish Church

65/67 Dean Path, Edinburgh EH4 3AT

Sunday Service – 11:00 am

(Crèche and Sunday School)

*The Village Church
in the Heart of the City*

All Are Welcome

Tour Guides

Do you enjoy showing the Village to your visitors? If so, would you like to become one of the DVA's Guides? We're looking to recruit a few more! We'll train you up, of course. Previous experience is not required!

If you're interested, please contact Caroline Gerard on 225 8879 (or at caroline.gerard@tinyworld.co.uk) to discuss what's involved. One thing she'll tell you is that it's a lot of fun, as well as being one of the DVA's essential fund-raising activities.

Join in!

If you care about the Dean area then make a note in your diary to come along to the DVA's AGM on Tuesday 26th April 2005 at 7.30pm at Edinburgh World Heritage Trust, 5 Charlotte Square. New committee members are needed, so if you'd like to take a more active role in your local community please get in touch with Alison McLaughlin (0131 226 2172 or alison@deanvillage.org) to express your interest.

10,000 steps to health

It's suggested that we should aim to walk 10,000 steps a day to maintain our health. Help deliver Dean Village News and on at least three days a year, you'll stand a chance of reaching the 10,000 target! Extra helpers are needed in all areas, including Belford Road, Belford Park, and Well Court, so if you can help please call Alison McLaughlin on 226 2172 or email alison@deanvillage.org with your name, address, phone number and the details of the area in which you are willing to deliver. We'll call you before each publication to check that you're available.

The deadline for articles for the next issue of Dean Village News is 1st April 2005. If you would like to write something for DVN, please email it to chris@deanvillage.org or send it to the Editor, Dean Village News, 13 Well Court, Dean Path, Edinburgh EH4 3BE.

Eventful times

Since the last issue of Dean Village News, we have had the DVA's annual dinner with wine tasting. This was well attended and a great evening was had by all at the La Cuisine d'Odile in the French Institute. The DVA's first Christmas Fair at Dean Parish Church Hall was a similar success and will be repeated in 2005, on a bigger scale. The carol singing around the tree by children from Mary Erskine and Stewart's Melville Junior School resulted in a record collection of £285. This was donated to Fresh Start (Edinburgh), the Edinburgh Churches' Charity supporting resettlement in the community of people who have been homeless. Thanks to everyone who came along to these events, and the volunteers who made it all happen. The enclosed membership and events form lists all the events we have planned for 2005, so pin the events side of the form to your notice board for future reference.. We hope you'll be able to make it to some of them including our new quiz night on 17th May in Dean Parish Church Hall.

DVA membership

It's our annual Dean Village Association membership recruitment drive. You'll find enclosed with this issue of Dean Village News, a membership form for you to complete and return with your membership fee. We do hope you will wish to join and support the work of the Dean Village Association. Donations are also always welcome and gratefully received. The DVA exists to maintain and improve the amenity of Dean Village and its environs, to protect and preserve the landscape and historical and architectural heritage and to promote the community interests of residents. Thank you to everyone who supports the DVA.

In 2005 we enclosed a review form with Dean Village News. Amongst much useful feedback, there was the suggestion that we should do more to encourage membership of the Dean Village Association. In response to this, in 2005 we will deliver all three issues of DVN to all properties in the Dean Conservation Area, rather than just the January issue. We hope that keeping in touch on a more regular basis, will encourage more residents to join. To cover the additional costs of a wider distribution, we have introduced advertising. If you contact one of the advertisers, please mention that you saw them in Dean Village News.

Contact the Dean Village Association committee

Chairman: Lawrence Walker, 48 Craigleith View
Edinburgh EH4 3JY

Treasurer: Maureen Mitchell, 8 Belford Mews
Edinburgh EH4 3BT

Secretary: Alison McLaughlin 0131 226 2172
alison@deanvillage.org

www.deanvillage.org